

PRODUCT NAME: AXEL TOP MOUNT

MATERIAL OPTIONS: BRUSHED STAINLESS STEEL

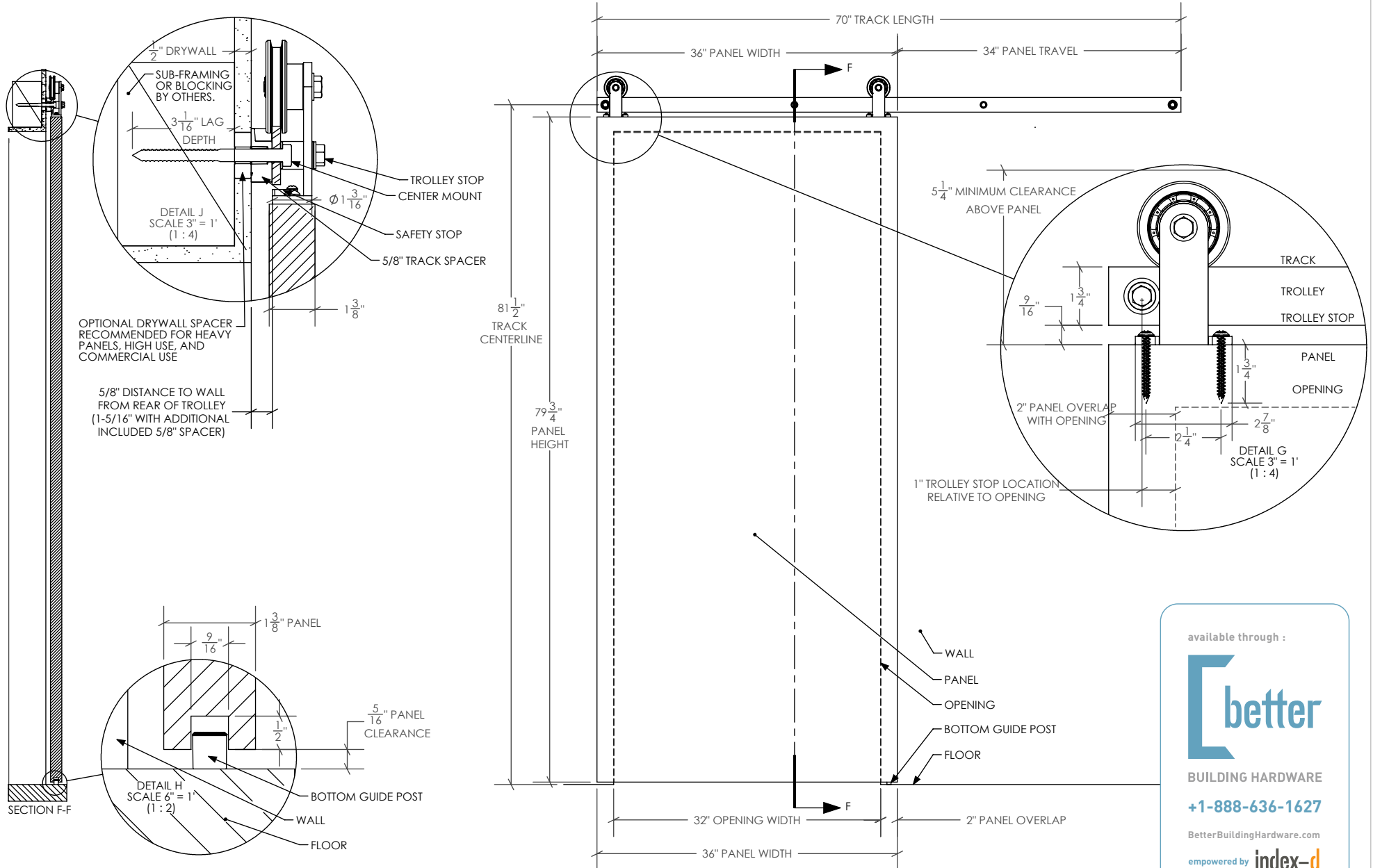
DRAWING SCALE: 3/4" = 1'-0" (1:16)

PAGE: 1/1

DATE: 8/8/2017

PRODUCT SPECIFICATIONS: -For panels 1-3/8" or thicker and up to 200 lbs.
-Available in three standard track lengths:
-70", designed for up to 32" opening & 36" panel.
-94", designed for up to 44" opening & 48" panel.
-116", designed for up to 55" opening & 59" panel.
-Track length and hole locations are field adjustable.
-Combine two systems for bi-parting and combine tracks for longer lengths.

Krownlab Inc.
2351 NW York St.
Portland, OR 97210
503-292-6998
www.krownlab.com
sales@krownlab.com



available through :

BETTER
BUILDING HARDWARE
+1-888-636-1627
BetterBuildingHardware.com
empowered by **index-d**